

QCAP SDK Communication ONVIF Development Guide

◆ Overview

For the ONVIF developer, In this document, we will demo and guide developer how to QCAP SDK that implement communication ONVIF function in ONVIF device manager.

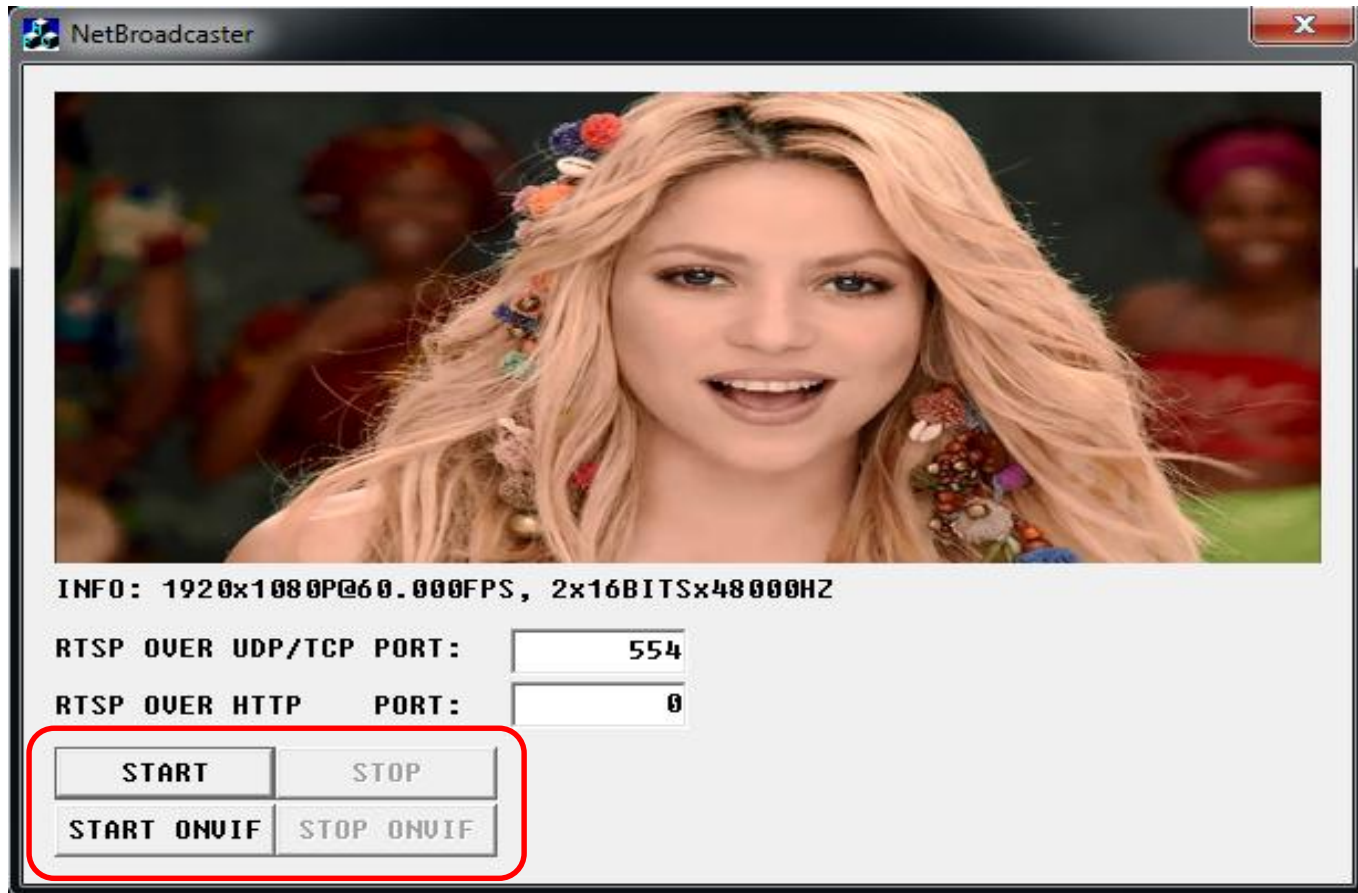
◆ Test software

ONVIF Device Manager v2.2.250

<http://sourceforge.net/projects/onvifdm/>

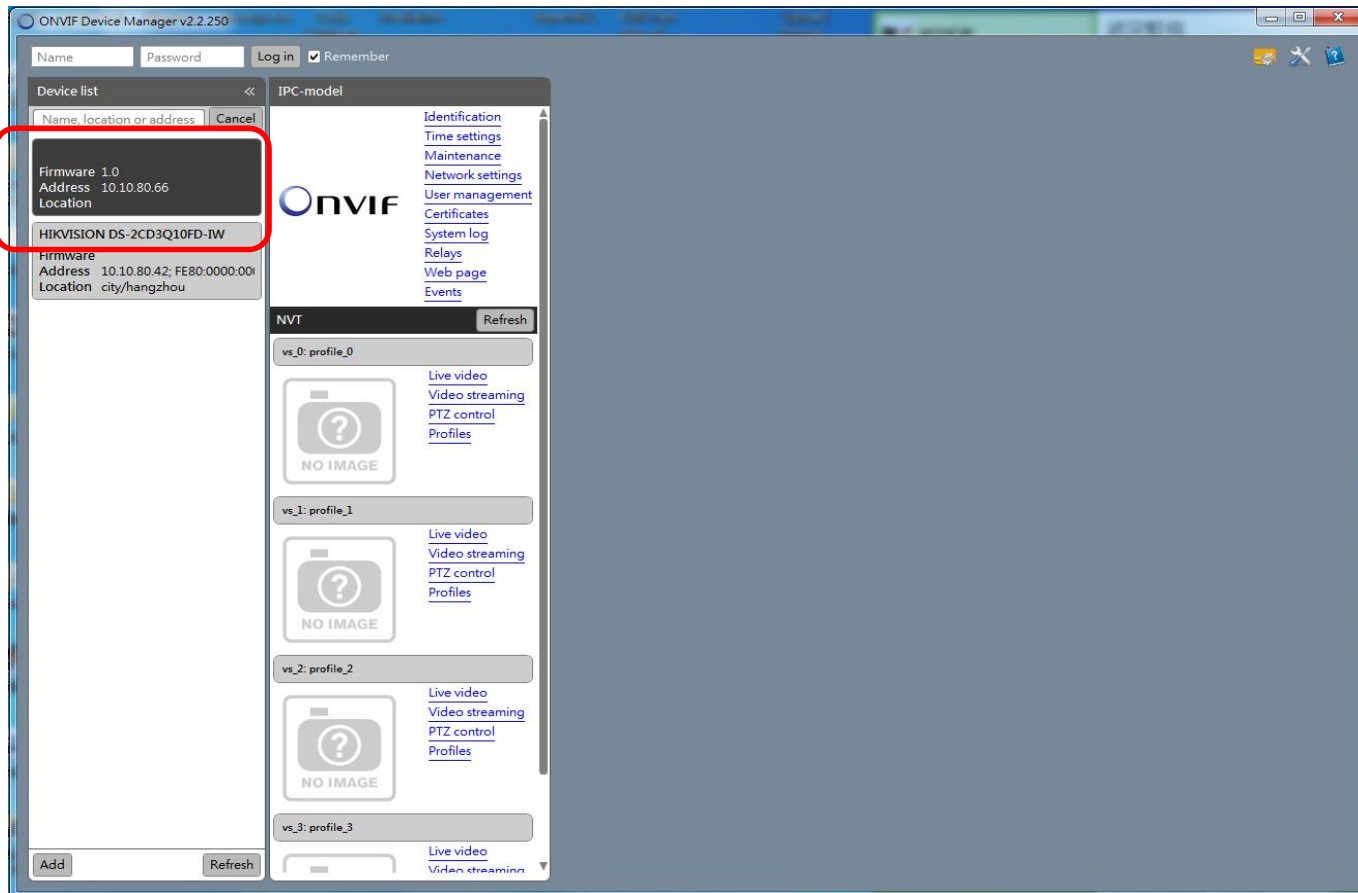
Communication ONVIF Application

1. The sample "QCAP\SAMPLES.ONVIF\ONVIF.SERVER.SC510N1.VC2010" demo how to use the ONVIF function in our SDK.



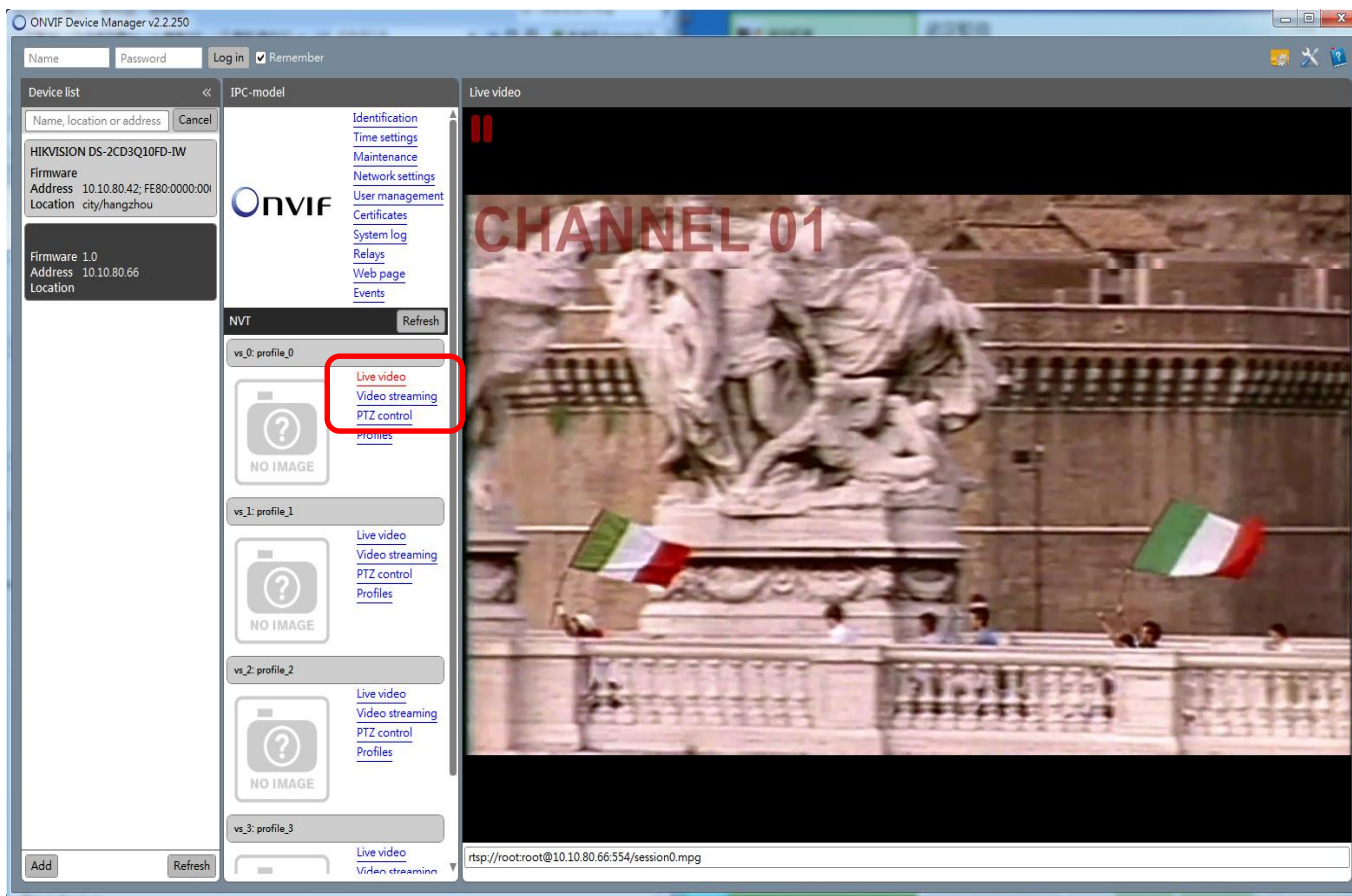
Communication ONVIF Application

2. When ONVIF Device Manager has been launched. ONVIF server is automatically detected as shown in below.



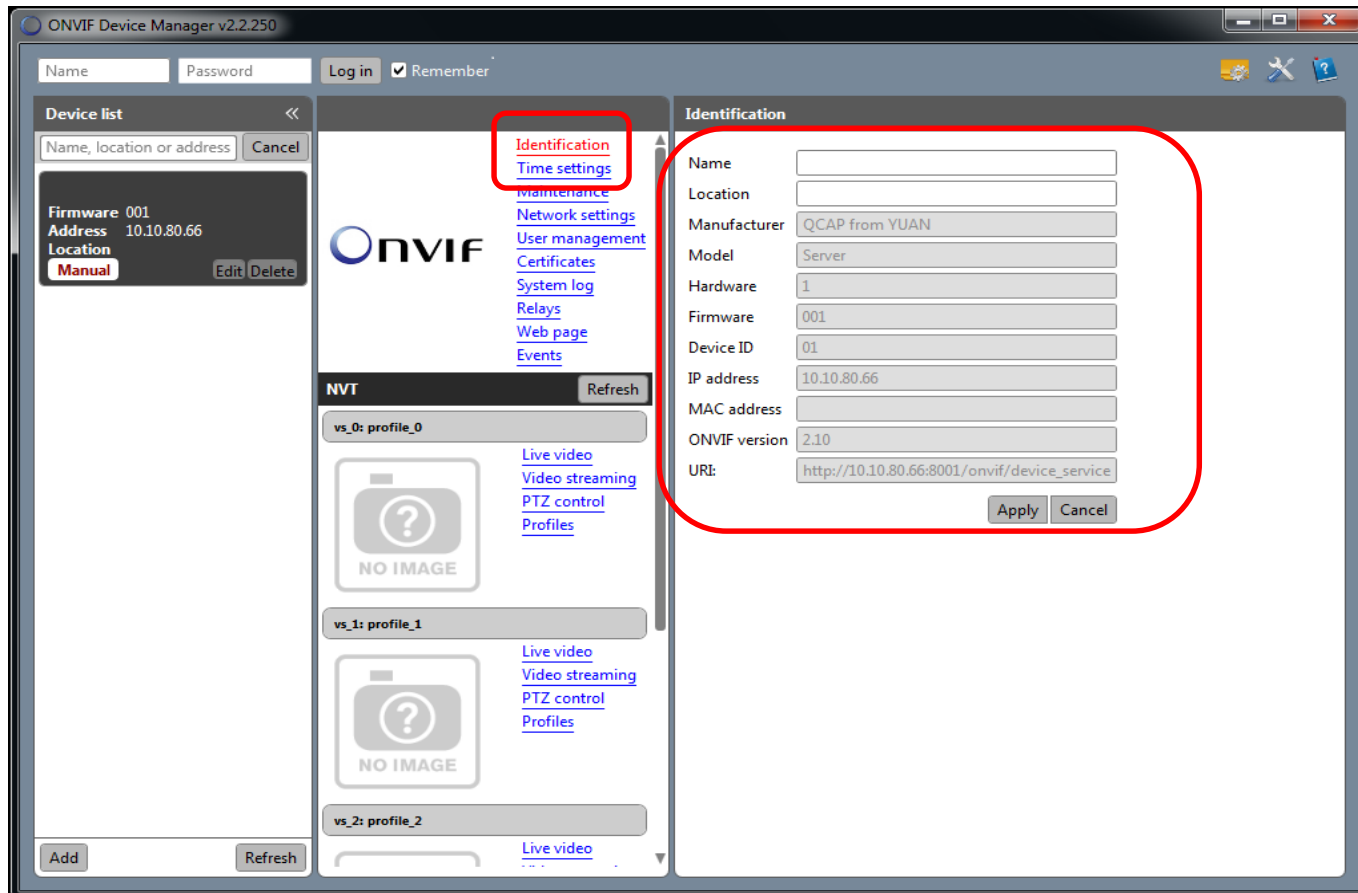
Communication ONVIF Application

3. Check live video from active video Channel Profile.



Communication ONVIF Application

4. Select Onvif Identification to check communication Onvif server configure such as Manufacturer, Model, Firmware version and serial number.



Communication ONVIF Application

5. Select video streaming to set communication Onvif server video configure such as FrameRate, Bitrate and Quality.

